

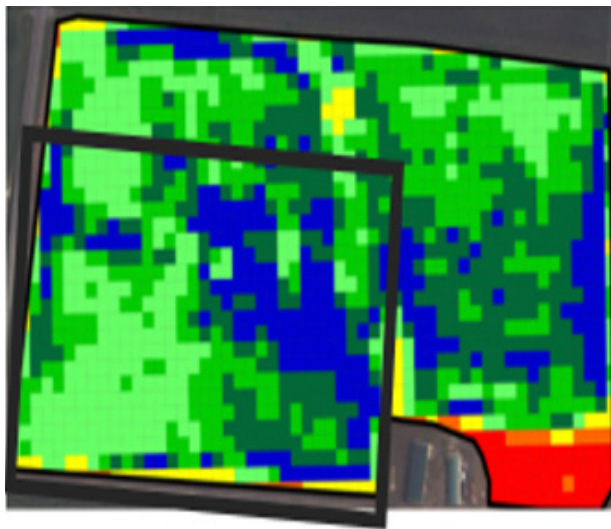
# ENCOURAGE CLASSIC

**ENCOURAGE CLASSIC** is a versatile tool for sod producers and turf managers. Originally developed to help agricultural crops overcome “herbicide drag” with post-emergent herbicide applications it brings several important benefits to the professional turf market.

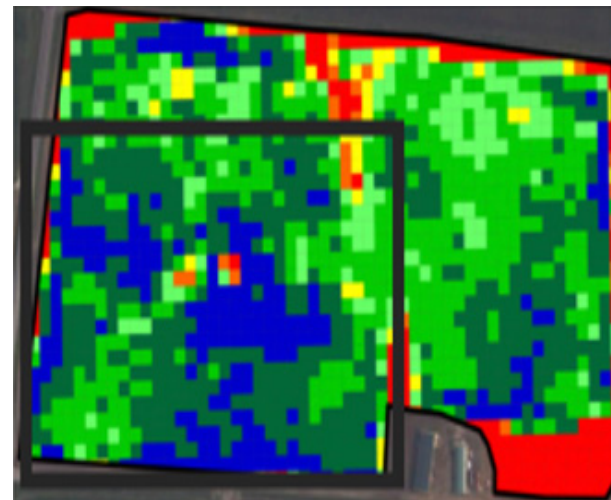
## Improving Turf Quality

- CLASSIC, at its most basic level, is a 2-1-2 foliar fertilizer formulated with urea, available potassium and soluble potash.
- It also contains chelated manganese, a micronutrient most turf is deficient in, to facilitate photosynthesis and other plant functions.
- Chelated iron is added for nitrogen metabolism, respiration and chlorophyll synthesis.
- High-quality humic acid, derived from leonardite, brings both plant and soil benefits, two of the most important being root stimulation and aiding iron availability.

## Improved Turf Vigor



14 Days After Application



30 Days After Application

Satellite imagery shows the improvement in greening and vigor on weakly-rooted sod.

## More Robust Root Systems



2 quarts/acre of CLASSIC generated more root mass, increased rhizome production, and produced higher quality sod for an easier harvest with better storage and shipping capability.

## Using CLASSIC

- As a stand-alone fertilizer application: Apply 2-4 quarts/acre in sufficient water volume to give coverage of the turf.
- As an adjuvant/tank mix partner with pesticide or nutrient applications: Apply 1-2 quarts/acre with good spray coverage.

## Other Benefits

In addition to an effective fertilizer CLASSIC brings other benefits to turf operations. It is formulated with adjuvants utilizing OROWET® technology. Whether sprayed alone or in a tank-mix CLASSIC offers more benefits:

- No additional adjuvants are needed when CLASSIC is tank mixed with pesticides or other nutrients, saving money and reducing spray material inventory.
- The OROWET technology in CLASSIC provides rapid penetration into weeds when tank mixed with systemic herbicides.
- When used with contact herbicides, fungicides or insecticides CLASSIC will deliver excellent spreading for control of pests and diseases.

## CLASSIC Tips

- Prior to harvest: 30-45 days before harvest apply at least 2 quarts/acre of CLASSIC to generate robust roots and tighten up the turf for easier cutting, handling and storage.
- After harvest: When the grass strips remaining after harvest begin to run spray 2 quarts/acre of CLASSIC to promote root development and a tighter root mass.

For more information contact your local Rovensa Next representative or visit [rovensanext-na.com](https://rovensanext-na.com)

Copyright © 2023 | All Rights Reserved. Registered trademarks are the property of their respective owners.  
Always read and follow label directions. Check with your state regulatory agency to determine registration status before use.

